

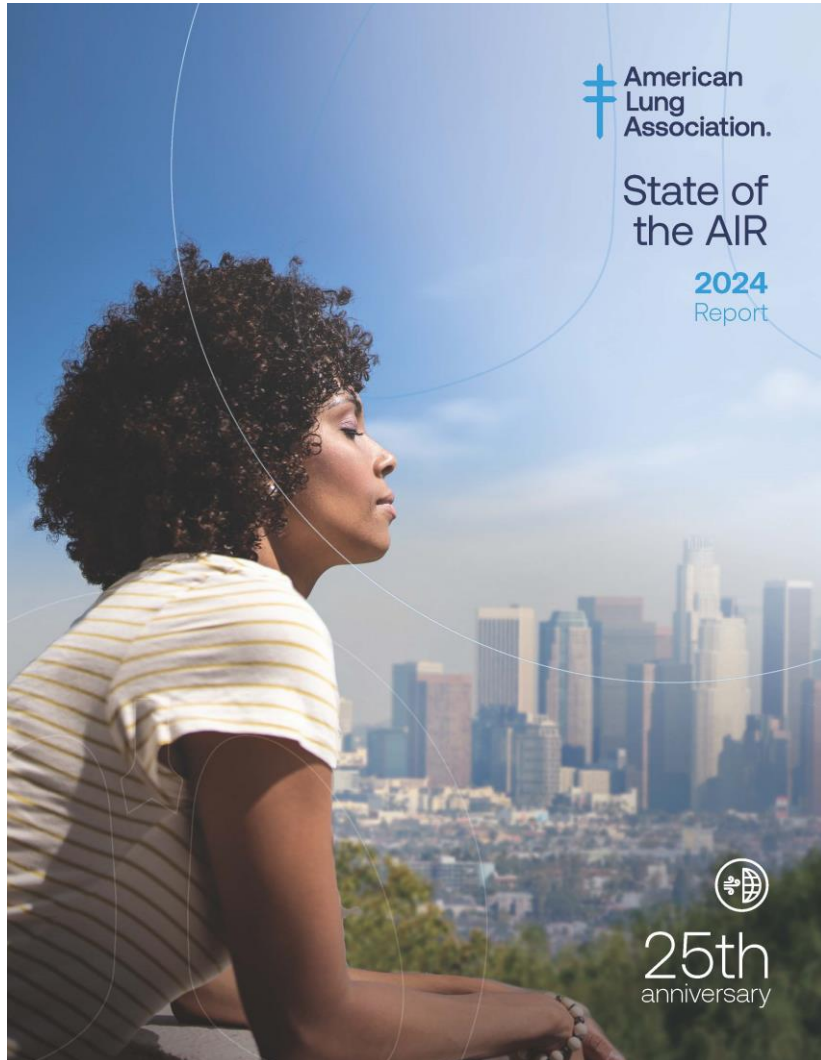


March 26, 2025

State of the Air
WESTAR



Our oldest signature report



Next Report:

April 23, 2025

- 2025 is the 26th annual edition
- Gives the public localized air quality information
- Focuses attention on ozone and particle pollution
- Highlight progress & challenges

A complex topic in everyday language

- Gives grades to 885 counties with monitors (of 3,221 counties)
- Ranks metro areas based on least - most of each pollutant

Key message: Everyone deserves clean air

Key message: **Not** a grade on agencies, policymakers, effort

Data, grades and rankings

States Collect Air Pollution Data in
2021, 2022 & 2023



EPA Reviews & Posts Data Online



Consultant Downloads the Data from EPA

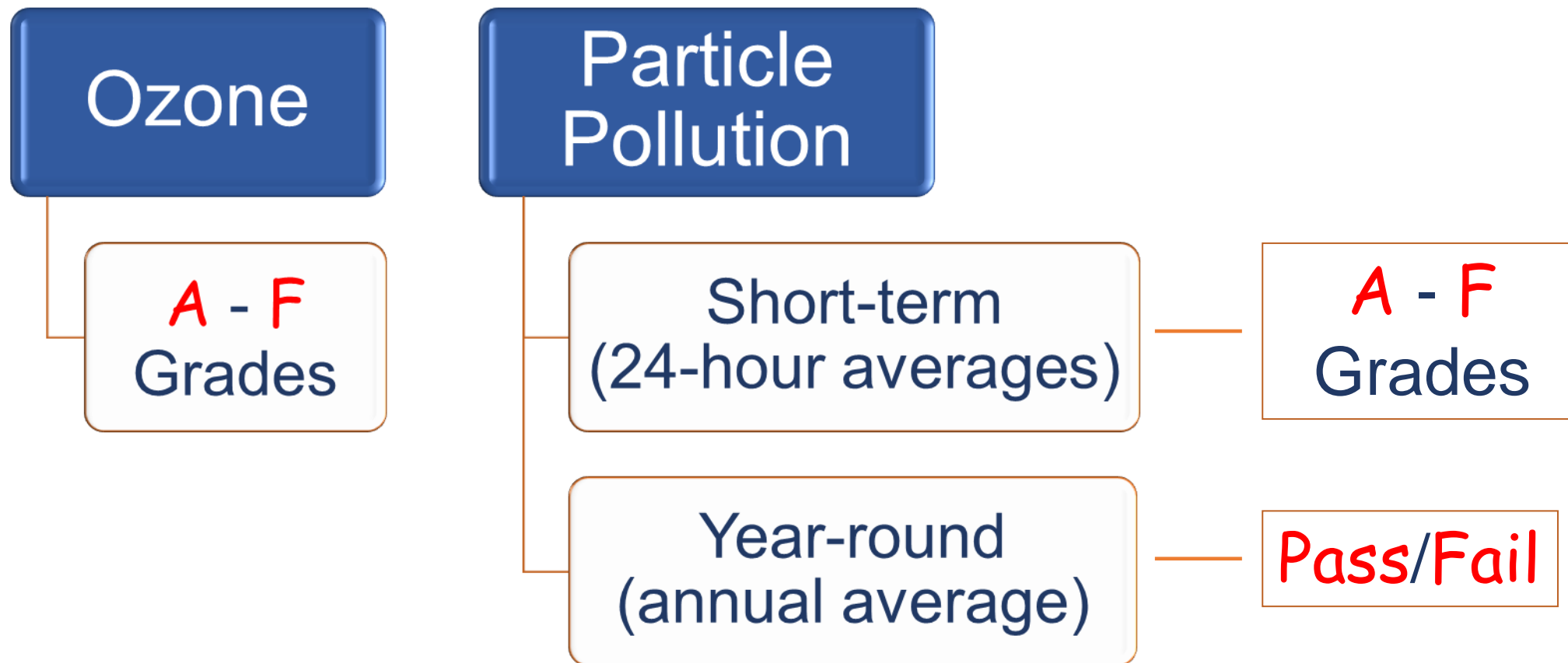


We Calculate Grades & Rankings

Once we get the data



What we grade



Grades are based on the Air Quality Index

| Air Quality Index (AQI) Values | Levels of Health Concern |
|---------------------------------------|--------------------------------------|
| <i>When the AQI is in this range:</i> | <i>..air quality conditions are:</i> |
| 0-50 | Good |
| 51-100 | Moderate |
| 101-150 | Unhealthy for Sensitive Groups |
| 151 to 200 | Unhealthy |
| 201 to 300 | Very Unhealthy |
| 301 to 500 | Hazardous |

- EPA yardstick for reporting air quality
- Translates monitored pollution levels into recommendations for action
- Used across the nation
- We use this for assigning grades for ozone & short-term particles

How the grades work

Report Card: Illinois

High Ozone Days Particle Pollution Populations at Risk

Illinois reports data on 23 out of 102 counties. Counties with no ozone data are not shown.

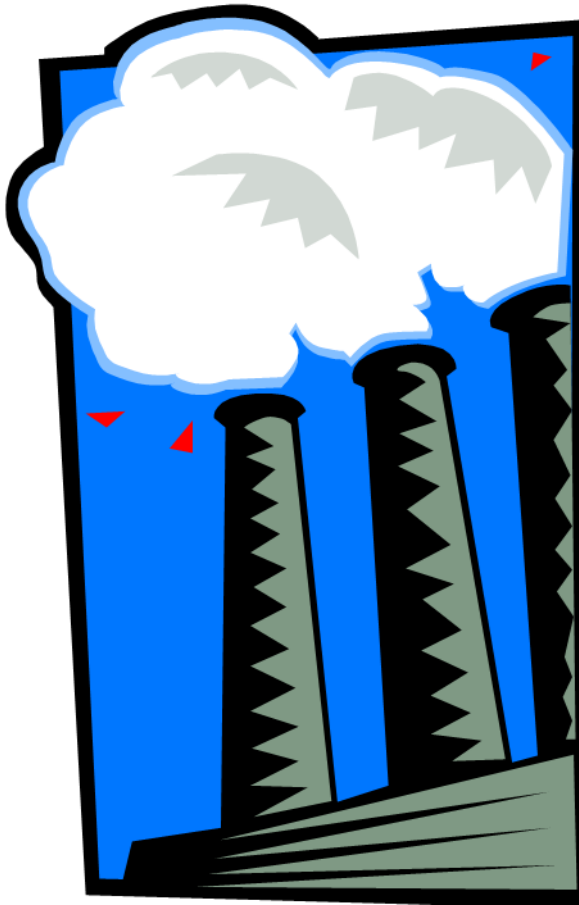
Sorted by County

| County | Grade | Wgt. Avg. | Orange Days | Red Days | Purple Days |
|-----------|-------|-----------|-------------|----------|-------------|
| Adams | A | 0.0 | 0 | 0 | 0 |
| Champaign | B | 0.7 | 2 | 0 | 0 |
| Clark | A | 0.0 | 0 | 0 | 0 |
| Cook | F | 15.5 | 39 | 5 | 0 |
| DuPage | F | 3.3 | 7 | 2 | 0 |

Wgt. Avg. is the basis for the grade

- Grades are based on weighted average (Wgt. Avg.)
- Wgt. Avg based on no. of days and pollution levels each day.
- Worse days count more in the calculation.
- 1 to 2 unhealthy ozone days on average each year = **C**.
- Here, 0.7 unhealthy ozone days on average each year = **B**.

Year-round particle pollution is different



- Day in and day out levels averaged over a year
- Grades are compared to national standard and either Pass or Fail
- We use EPA's calculation for each county's average—called a *design value*
- *Fail* means county has $>9.0 \mu\text{g}/\text{m}^3$ *average*

Two grades for particles

Report Card: Pennsylvania

High Ozone Days

Particle Pollution

Populations at Risk

Design Value is the basis for the Annual Particle grade

Pennsylvania reports data on **32** out of **67** counties. Counties with no particle pollution data are not shown.

Sorted / County

| County | Grade | Wgt. Avg. | Orange Days | Red Days | Purple Days | Maroon Days | Grade (Annual) | Design Value |
|-----------|-------|-----------|-------------|----------|-------------|-------------|----------------|--------------|
| Adams | B | 0.7 | 2 | 0 | 0 | 0 | INC | INC |
| Allegheny | F | 7.0 | 8 | 2 | 0 | 0 | Fail | 10.9 |
| Armstrong | B | 0.3 | 0 | 0 | 0 | 0 | Pass | 8.9 |
| Beaver | C | 1.0 | 3 | 0 | 0 | 0 | Pass | 8.6 |

Wgt. Avg. is the basis for the Short Term particle grade

What about when there's no data?

Washington: Thurston

| Ozone | Particle Pollution | |
|------------|--------------------|------------|
| | 24-Hour | Annual |
| INC | DNC | DNC |

[How is my grade calculated?](#)

If you live in Thurston County, the air you breathe needs your support.

[SIGN OUR PETITION](#)

[SHARE YOUR STORY](#)

[View Related Metropolitan Area](#)



- DNC means **Data Not Collected**. No monitors for that pollutant in that county.
- INC means **Incomplete**. Not enough data for the three years to grade.

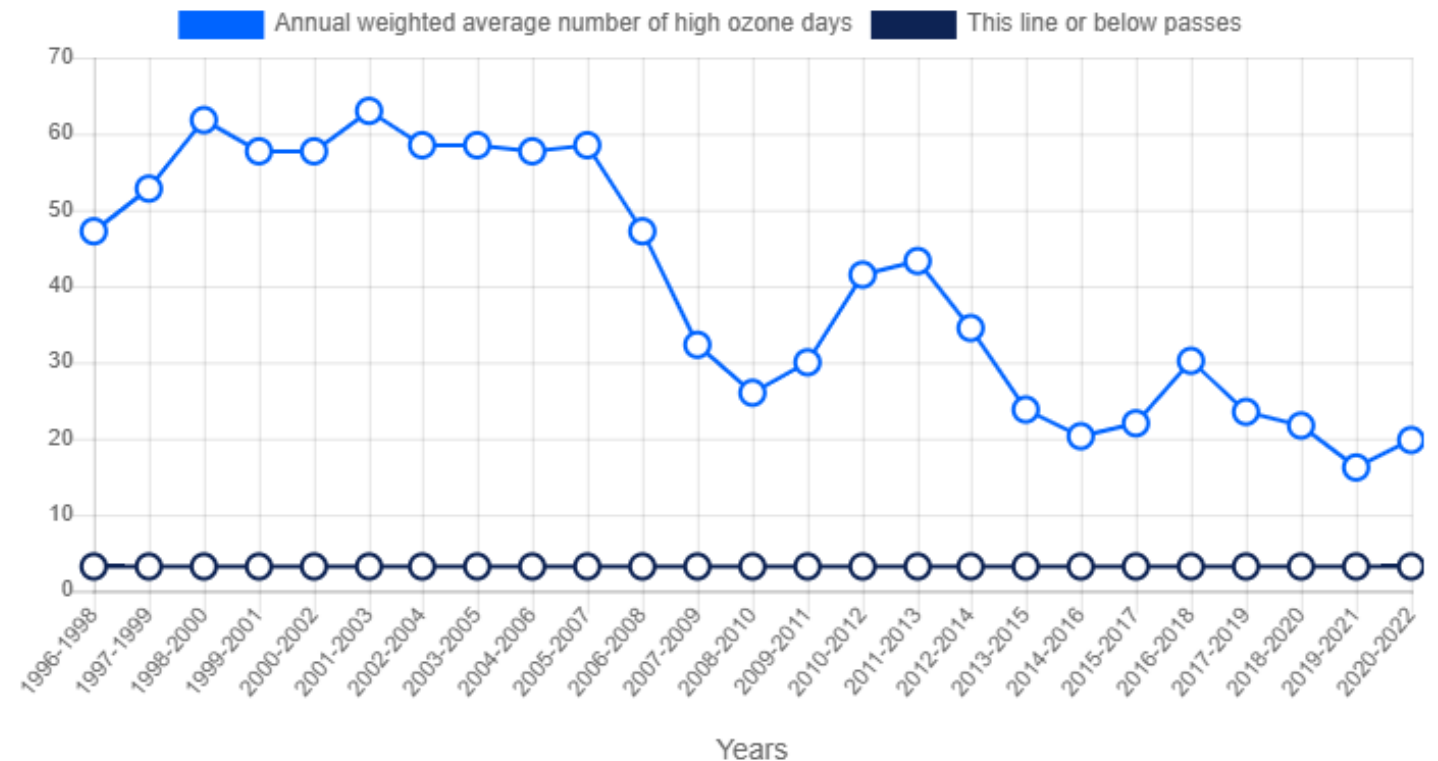
How we rank cities

- Separate rankings for ozone, short-term particles and year-round particles
- Cities ranked by the weighted average or design value of their most polluted county(ies)
- We follow Office of Management and Budget definitions of cities
 - Metropolitan Statistical Area
 - Combined Statistical Area

Trends in Air Quality

- If available, trend charts are displayed for ozone, short-term particles and year-round particles
- Charts shown for individual counties as well as for worst county values each year in entire metro area.

Las Vegas-Henderson, NV



Next Report:

April 23, 2025

Questions?